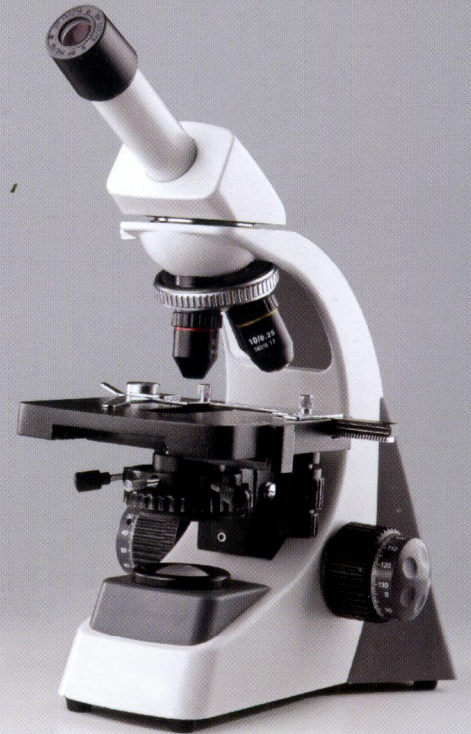
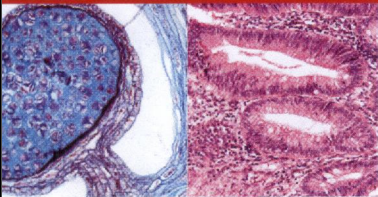




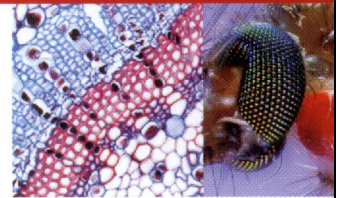
EDUCATOR

Monocular Student Microscope



EDUCATOR PLUS

Monocular Biological Microscope



Technical Specifications

Monocular Observation Head

- Monocular head inclined at 45° rotatable at 360°.

Eyepiece

EWf 10X FOV 18mm

Objectives (Finite)

- Achromatic 4X
- Achromatic 10X
- Achromatic 40X(S L)

Sub Stage Condenser

Abbe condenser N.A.1.25 swing out filter holder, iris diaphragm.

Mechanical Body

- Quadruple nosepiece revolves on ball bearing.
- Mechanical stage size 125mm X 135mm having low positioned co-axial controls on ball bearing.
- Built-in-base illumination system with 6V-20W halogen bulb and power supply.
- Cross movement 55mm X 75mm.

Standard Accessories

6V/20W halogen tungsten bulb, blue filter styrofoam molded pack.

Binocular Observation Head

- Observation head inclined at 45° rotatable at 360°.

Eyepiece

EWf 10X FOV 18mm

Objectives

- DIN Achromatic 4X
- DIN Achromatic 10X
- DIN Achromatic 40X(S L)
- DIN Achromatic 100X Oil(S L)

Sub Stage Condenser

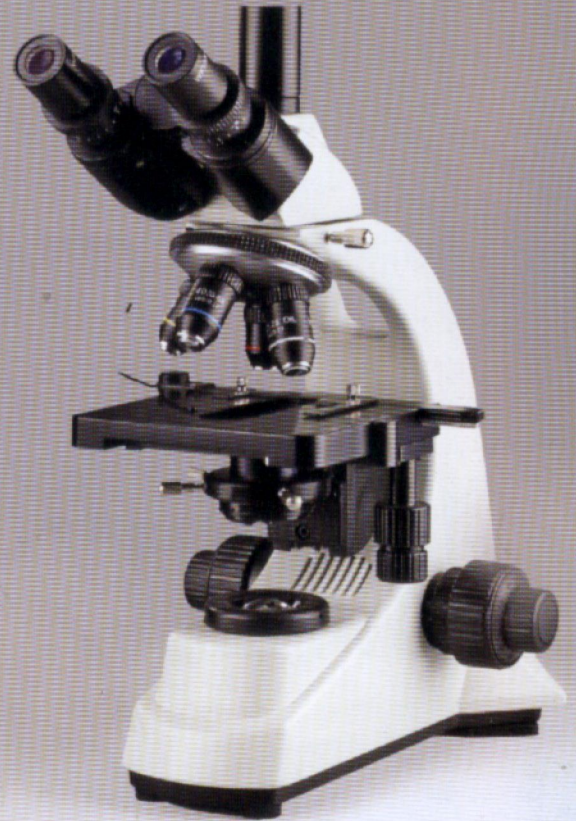
Abbe condenser N.A.1.25 swing out filter holder, iris diaphragm.

Mechanical Body

- Co-axial focusing system. PRE-FOCUSING LEVER & TENSION ADJUSTMENT RING.
- The slow motion has 1Div=0.02mm.
- Quadruple nosepiece revolves on ball bearing.
- Mechanical stage size 132mm X 142mm having low positioned
- co-axial controls on ball bearing.
- Built-in-base illumination system with LED halogen bulb and power supply.
- Cross movement 55mm X 75mm.

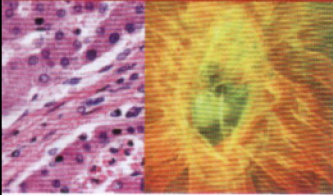
Standard Accessories

6V/20W halogen tungsten bulb, blue filter styrofoam molded pack.



SMART

Binocular Biological Microscope



SMART PLUS

Trinocular Biological Microscope



Technical Specifications

Binocular Observation Head

- Observation head inclined at 30° rotatable at 360°.
- Diopter adjustment ring on ocular tube.
- Interpupillary distance from 55mm to 75mm.

Eyepiece

EWF 10X FOV 18mm

Objectives

- S-Plan Achromatic 4X
- S-Plan Achromatic 10X
- S-Plan Achromatic 40X(S L)
- S-Plan Achromatic 100X Oil(S L)

Sub Stage Condenser

Abbe condenser N.A.1.25 swing out filter holder, iris diaphragm.

Mechanical Body

- Co-axial focusing system. PRE-FOCUSING LEVER & TENSION ADJUSTMENT RING.
- The slow motion has 1Div=0.02mm.
- Quadruple nosepiece revolves on ball bearing.
- Mechanical stage size 125mm X 135mm having low positioned co-axial controls on ball bearing.
- Built-in-base illumination system with 6V-20W halogen bulb and power supply.
- Cross movement 55mm X 75mm.

Standard Accessories

6V/20W halogen tungsten bulb, blue filter styrofoam molded pack.

Trinocular Observation Head

- Observation head inclined at 30° rotatable at 360°.
- Diopter adjustment ring on ocular tube.
- Vertical tube for digital micro photography.
- Interpupillary distance from 55mm to 75mm.

Eyepiece

EWF 10X FOV 18mm

Objectives

- S-Plan Achromatic 4X
- S-Plan Achromatic 10X
- S-Plan Achromatic 40X(S L)
- S-Plan Achromatic 100X Oil(S L)

Mechanical Body

- Co-axial focusing system. PRE-FOCUSING LEVER & TENSION ADJUSTMENT RING.
- The slow motion has 1Div=0.02mm.
- Quadruple nosepiece revolves on ball bearing.
- Mechanical stage size 132mm X 142mm having low positioned co-axial controls on ball bearing.
- Built-in-base illumination system with 6V-20W halogen bulb and power supply.
- Cross movement 55mm X 75mm.

Sub Stage Condenser

Abbe condenser N.A.1.25 swing out filter holder, iris diaphragm.

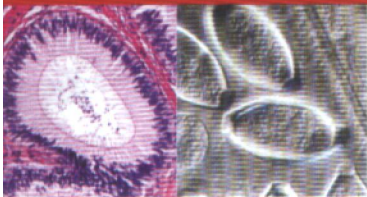
Standard Accessories

6V/20W halogen tungsten bulb, blue filter styrofoam molded pack.



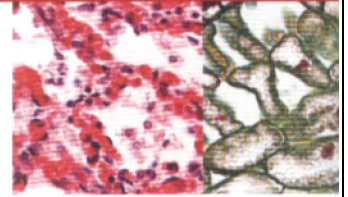
PRIME

Binocular/
Trinocular
Biological
Microscope



CROWN

Trinocular
Medical
Microscope



Technical Specifications

Binocular Observation Head

- Siedentopf observation head inclined at 30° rotatable at 360°.
- Diopter adjustment ring on ocular tube.
- Interpupillary distance from 55mm to 75mm.

Eyepiece

EFW 10X (Paired) FOV 18mm

Objectives (Infinity)

- E-Plan Achromatic 4X
- E-Plan Achromatic 10X
- E-Plan Achromatic 40X (S.L.)
- E-Plan Achromatic 100X Oil (S.L.)

Sub Stage Condenser

Abbe condenser N.A. 1.25 with iris diaphragm.

Mechanical Body

- Co-axial focusing system. PRE-FOCUSING LEVER & TENSION ADJUSTMENT RING.
- The slow motion has 1Div=0.02mm.
- Reverse angle quadruple nosepiece revolves on ball bearing.
- Mechanical stage size 145mm x 140mm having low positioned controls.
- The built-in-base illumination system with 6V-20W Halogen bulb and power supply.
- Cross movement 55mm x 75mm.
- Blue filter is fixed in the base collector.

Standard Accessories

6V/20W halogen tungsten bulb, dust cover, operating manual, styrofoam molded pack.

Trinocular Observation Head

- Siedentopf observation head inclined at 30° rotatable at 360°.
- Diopter adjustment ring on ocular tube.
- Interpupillary distance from 52mm to 75mm.

Eyepiece

Extra wide field 10X (paired) F.O.V. 20mm.

Objectives (Infinite)

- E-Plan Achromatic 4X
- E-Plan Achromatic 10X
- E-Plan Achromatic 40X (S.L.)
- E-Plan Achromatic 100X Oil (S.L.)

Illuminator

Koehler's illumination system with 3V LED lamp adjustable brightness.

Mechanical Body

- Co-axial focusing system. PRE-FOCUSING LEVER & TENSION ADJUSTMENT RING. The slow motion has 1Div=0.02mm.
- Reverse angle quadruple nosepiece revolves on ball bearing.
- Mechanical stage size 156mm x 138mm having low positioned controls on ball bearing guide ways.

Sub Stage Condenser

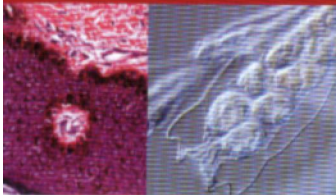
Abbe condenser N.A. 1.25 with adjustable iris diaphragm.

Standard Accessories

Dust cover, blue filter, operating manual and styrofoam molded pack.

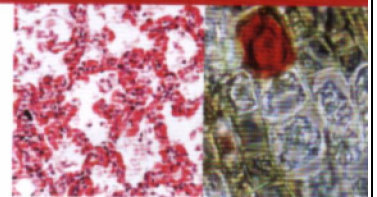


SELECT



Trinocular
Medical
Microscope

PREMIUM



Trinocular
Research
Microscope

Technical Specifications

Trinocular Observation Head

- Siedentopf observation head inclined at 30° rotatable at 360°.
- Diopter adjustment ring on ocular tube.
- Interpupillary distance from 55mm to 75mm.

Eyeiece

- Extra wide field 10X (paired) F.O.V. 18mm.

Objectives (Infinite Corrected)

- Plan Achromatic 4X
- Plan Achromatic 10X
- Plan Achromatic 40X (S.L.)
- Plan Achromatic 100X Oil (S.L.)

Sub Stage Condenser

- Abbe condenser N.A. 1.25 with iris diaphragm.

Mechanical Body

- Co-axial focusing system. PRE-FOCUSING LEVER & TENSION ADJUSTMENT RING. The slow motion has 1Div=0.02mm.
- Reverse angle quadruple nosepiece revolves on ball bearing.
- Mechanical stage size 125mm x 135mm having low positioned controls on ball bearing guide ways.
- The built-in-base illumination system with 3W LED lamp with intensity control knob.

Standard Accessories

- Dust cover, operating manual, styrofoam molded pack.

Trinocular Observation Head

- Siedentopf observation head inclined at 30° rotatable at 360°.
- Diopter adjustment ring on ocular tube.
- Interpupillary distance from 48mm to 75mm.

Eyeiece

- Extra wide field 10X (paired) F.O.V. 22mm.

Objectives (Infinite Corrected)

- CCIS Plan Achromatic 1.5X
- CCIS Plan Achromatic 4X
- CCIS Plan Achromatic 10X
- CCIS Plan Achromatic 20X
- CCIS Plan Achromatic 40X (S.L.)
- CCIS Plan Achromatic 100X Oil (S.L.)

Mechanical Body

- Co-axial focusing control with large knob, PRE-FOCUSING LEVER & TENSION ADJUSTMENT RING.
- Reverse angle sextuple nosepiece revolving on ball bearings.
- Mechanical stage size 185mmX142mm & having low positioned co-axial controls on ball bearing guide ways.

Illuminator

- Koehler's illumination system with 12V-50W halogen lamp, adjustable brightness.

Sub Stage Condenser

- Swing out front lens, abbe condenser N.A. 0.9/1.25, filter holder and iris diaphragm.

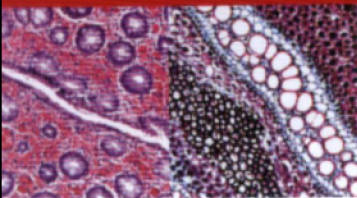
Standard Accessories

- 12V/50W halogen tungsten bulb, dust cover, blue filter, operating manual and styrofoam molded pack.



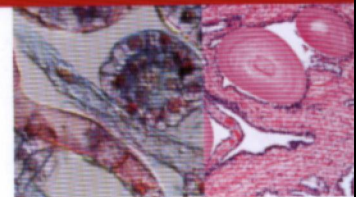
CLASSIC

Trinocular
Medical
Microscope



CLASSIC PLUS

Trinocular
Medical
Microscope



Technical Specifications

Trinocular Observation Head

- Siedentopf observation head inclined at 30° rotatable at 360°.
- Diopter adjustment ring on ocular tube.
- Interpupillary distance from 55mm to 75mm.

Eyepiece

Extra wide field 10X (paired) F.O.V. 22mm.

Objectives (Infinity Corrected)

- Plan Achromatic 4X
- Plan Achromatic 10X
- Plan Achromatic 40X (S.L.)
- Plan Achromatic 100X Oil (S.L.)

Sub Stage Condenser

Abbe condenser N.A. 1.25 with adjustable iris diaphragm.

Mechanical Body

- Co-axial focusing system. PRE-FOCUSING LEVER & TENSION ADJUSTMENT RING.
- Reverse angle quadruple nosepiece revolves on ball bearing.
- Rackless ceramic coated mechanical stage size 193mmX155mm. having low positioned co-axial controls.
- The illuminator incorporates 3W LED lamp and has adjustable iris diaphragm.
- Provision to incorporate Polarizer / Analyzer.

Standard Accessories

Dust cover, operating manual, blue filter and styrofoam molded pack.

Trinocular Observation Head

- Siedentopf observation head inclined at 30° rotatable at 360°.
- Diopter adjustment ring on ocular tube.
- Interpupillary distance from 47mm to 75mm.

Eyepiece

Extra wide field 10X (paired) F.O.V. 22mm.

Objectives (Infinity Corrected)

- Plan Achromatic 4X
- Plan Achromatic 10X
- Plan Achromatic 40X (S.L.)
- Plan Achromatic 100X Oil (S.L.)

Mechanical Body

- Co-axial focusing system. PRE-FOCUSING LEVER & TENSION ADJUSTMENT RING.
- Reverse angle quadruple nosepiece revolves on ball bearing.
- Rackless ceramic coated mechanical stage size 216mmX150mm. having low positioned co-axial controls.
- The illuminator incorporates 3W LED lamp and has adjustable iris diaphragm.

Sub Stage Condenser

Abbe condenser N.A. 1.25 with adjustable iris diaphragm.

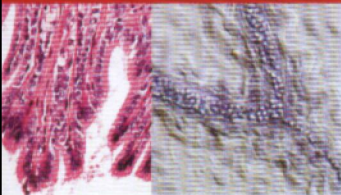
Standard Accessories

Dust cover, operating manual, blue filter and styrofoam molded pack.



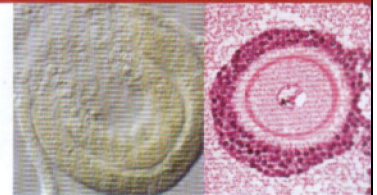
VICTORY

Trinocular Inverted Microscope



VICTORY PLUS

Inverted Tissue Culture Microscope with Phase Contrast



Technical Specifications

Trinocular Observation Head

- Siedentopf observation head inclined at 45°
- Diopter adjustment ring on ocular tube.
- Interpupillary distance from 48mm to 75mm.

Eyeiece

EWf 10X (Paired) F.O.V. 18mm.

Objectives (Infinite Corrected)

- LWD Plan 10X /0.25 W.D. 7.9mm
- LWD Plan 25X /0.40 W.D. 5.0mm
- LWD Plan 40X /0.60 W.D. 3.6mm

Illuminator

6V/30W halogen lamp with spherical collector lens, continuous regulation of the illumination.

Mechanical Body

- Quadruple nosepiece. PRE-FOCUSING LEVER & TENSION ADJUSTMENT RING are on focusing mechanism.
- Hard coated mechanical stage is 180mm X 165mm. Movement 50mm X 40mm.

Sub Stage Condenser

Long working distance 45mm. condenser with N.A. 0.35, field diaphragm, pull out filter socket.

Standard Accessories

Electric cable, fuse, vinyl dust cover, operating manual, 6V/30W halogen bulb, styrofoam molded pack and blue filter.

Filter

Blue glass filter.

Binocular Observation Head

- Siedentopf observation head inclined at 45°.
- Diopter adjustment ring on ocular tube.
- Interpupillary distance from 53mm to 75mm.

Eyeiece

PWF 10X (paired) F.O.V. 22mm and centering telescope.

Objectives (Infinite)

- LWD infinity Plan 10X/ 0.25 W.D. 4.3mm
- LWD infinity Plan 20X/ 0.40 W.D. 5.1mm
- LWD infinity Plan 40X/ 0.65 W.D. 3.5mm
- LWD infinity Plan Phase 10X/ 0.25 W.D. 4.3mm

Filters

Green, blue glass filters.

Mechanical Body

- Quintuple nosepiece. PRE-FOCUSING LEVER & TENSION ADJUSTMENT RING are on focusing mechanism.
- Hard coated mechanical stage is 227mm X 208mm. movement 53mm X 75mm. Glass plate diameter 118mm.

Illuminator

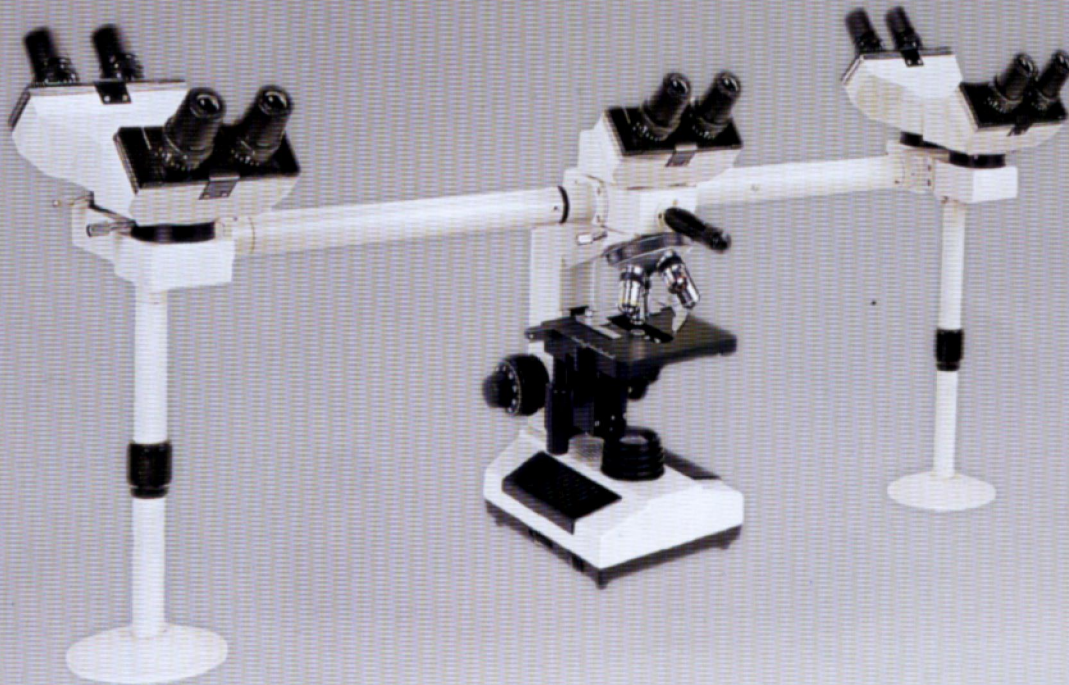
12V/30W halogen lamp with a spherical collector lens, continuous regulation of the illumination.

Sub Stage Condenser

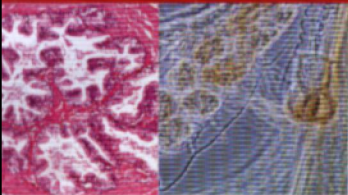
Long working distance condenser 55mm. N.A 0.35, phase annular for 10X objective.

Standard Accessories

Electric cable, fuse, vinyl dust cover, operating manual and styrofoam molded pack.



SELECT PENTEX



Penta Head Teaching Microscope

Technical Specifications

Binocular Observation Heads (Five)

- Sliding Binocular head inclined at 45°. Main observation head rotatable at 360°.

Eyepiece

Wide field Eyepiece 10X (Paired)
FOV 18mm

Objectives (Finite)

- Plan achromatic 4X
- Plan achromatic 10X
- Plan achromatic 40X (SL)
- Plan achromatic 100X (SL) Oil

Illuminator

24 V/100W Halogen lamps, adjustable brightness.

Mechanical Body

- Co-axial focusing control with large knob, PRE- FOCUSING LEVER & TENSION ADJUSTMENT RINGS.
- Quadruple nosepiece revolving on ball bearings.
- Mechanical stage size 140mm X 140mm & having low positioned co-axial controls on ball bearing guide ways.

Sub Stage Condenser

Abbe Condenser N.A.1.25, swing out filter holder. Iris Diaphragm, top lens.

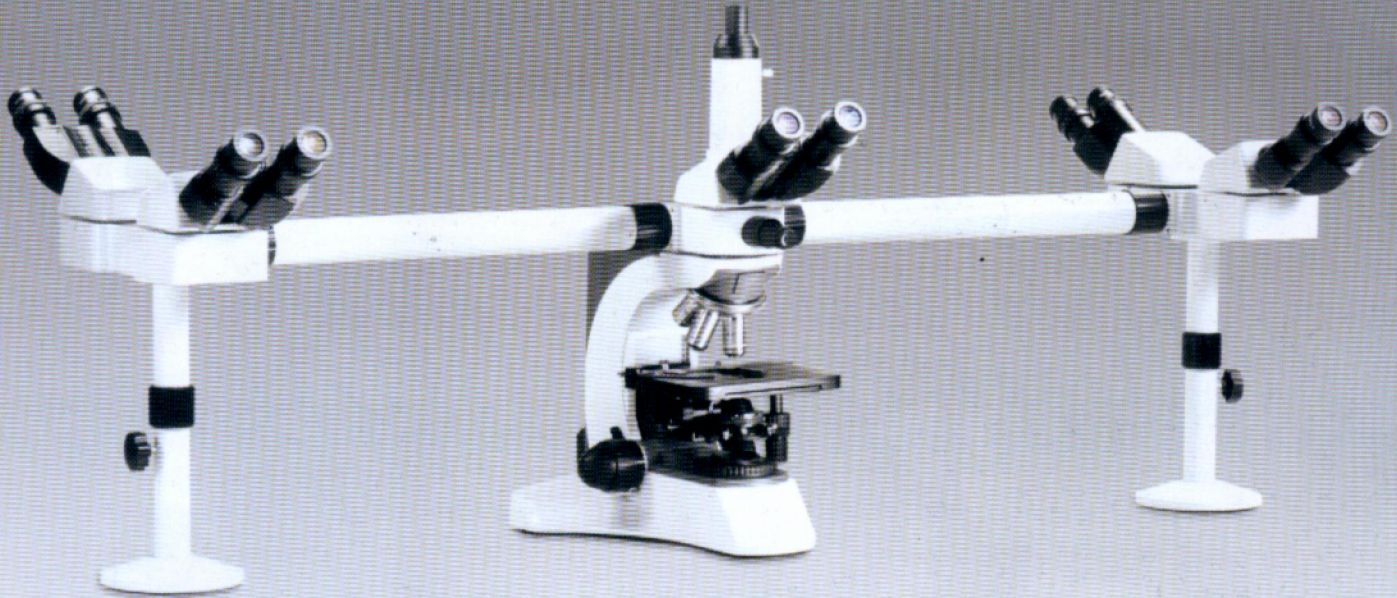
Pointer

Green LED pointer, Brightness adjustable.

Standard Accessories

Bulb, Styro-Foam boxes.

ANALYTICA BIOTECH CORP.



PREMIUM PENTEX

Penta Head Teaching Microscope



Technical Specifications

Observation Heads

- Trinocular observation head inclined at 30° rotatable at 360° (One set)
- Binocular observation heads inclined at 30° fixed on adjustable stands. (Four Set)

Eyeiece

Wide field Eyeiece 10X (paired)
F.O.V. 20mm.

Objectives

- CCIS Plan Achromatic 1.5X
- CCIS Plan Achromatic 4X
- CCIS Plan Achromatic 10X
- CCIS Plan Achromatic 20X
- CCIS Plan Achromatic 40X (S L)
- CCIS Plan Achromatic 100X (S L) Oil

Mechanical Body

- Co-axial focusing control with large knob, PRE FOCUSING LEVER & TENSION ADJUSTMENT RING.
- Reverse angle sextuple nosepiece revolving on ball bearings.
- Mechanical stage size 185mmX142mm & having low positioned co-axial controls on ball bearing guide ways.

Illuminator

Koehler's illumination system with 24V-100W halogen lamp, adjustable brightness.

Sub Stage Condenser

Swing out top lens. Abbe condenser N.A 0.9/1.25 with swing out filter holder. Iris diaphragm, top lens.

Pointer

Dual color LED pointer, Brightness adjustable.

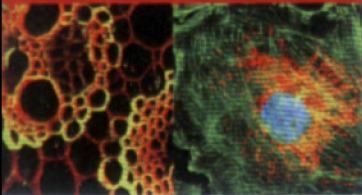
Standard Accessories

Blue & grey filters, LED bulb, halogen bulb 24V/100W, styrofoam boxes.



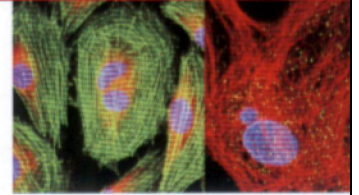
FLUOREX LED

Trinocular LED
Fluorescence
Microscope



FLUOREX

Trinocular
Fluorescence
Microscope



Technical Specifications

Trinocular Observation Head

- Siedentopf observation head inclined at 30° rotatable at 360°.
- Diopter adjustment ring on ocular tube.
- Interpupillary distance from 55mm to 75mm.

Eyepiece

- Extra wide field 10X (paired)
- F.O.V. 22mm.

Objectives

(Spherochromatic aberration infinity fluorescence)

- Flour Plan 4X
- Flour Plan 10X
- Flour Plan 40X
- Flour Plan 100X

Excitation Filters

- B Excitation (460nm-470nm) standard.
- G Excitation (520nm-530nm) standard.
- V Excitation (390nm-400nm) standard.
- UV Excitation (360nm-370nm) standard.

Mechanical Body

- Co-axial focusing system provided PRE-FOCUSING LEVER & TENSION ADJUSTMENT RING is available on right & left side respectively.
- The mechanical stage is 210mmX140mm and has co-axial low positioned controls.
- The built-in-base illumination system is incorporated.
- 3V high brightness white LED, adjustable brightness .

Light Source

- Transmitted light source: 3V LED bulb.
- Epi-fluorescence light source 3V high brightness LED lamps. Enable selecting monochromatic or dichromatic LED for light source.

Standard Accessories

- Fuse tube, power cord, instruction manual, dust cover, power supply for LED lamp, blue filter and styrofoam molded pack.

Trinocular Observation Head

- Siedentopf observation head inclined at 30° rotatable at 360°.
- Interpupillary distance from 55mm to 75mm.

Eyepiece

- Eyepiece W.F. 10X (paired) FOV 18mm.

Objectives (Infinity corrected)

- Plan Achromatic 4X
- Plan Achromatic 10X
- Plan Achromatic 40X (SL)
- Plan Achromatic 100X (SL)

Excitation Filter

- B Excitation (420nm-485nm) standard
- G Excitation (460nm-550nm) standard.

Light Source

- Transmitted light source: 6V/20W tungsten halogen bulb. Epi-Fluorescence light source: 100W high pressure mercury lamp.

Mechanical Body

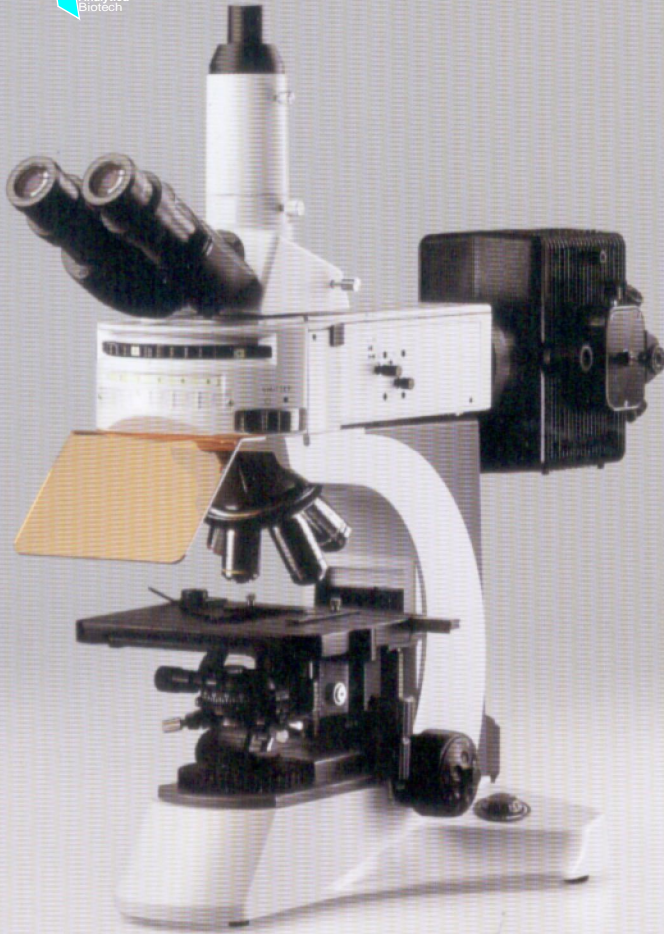
- Reverse angle quadruple nosepiece revolves on ball bearing.
- Co-axial focusing system. PRE-FOCUSING LEVER & TENSION ADJUSTMENT RING are on right & left side respectively.
- The Mechanical stage is 145mmX140mm and has co-axial low positioned controls.
- The built-in-base illumination system incorporated 6V/20W Halogen tungsten lamp.
- Cross movement 55mm X 75mm.
- Blue filter is fixed in the base collector.

Sub Stage Condenser

- N.A.1.25 Abbe condenser with iris diaphragm.

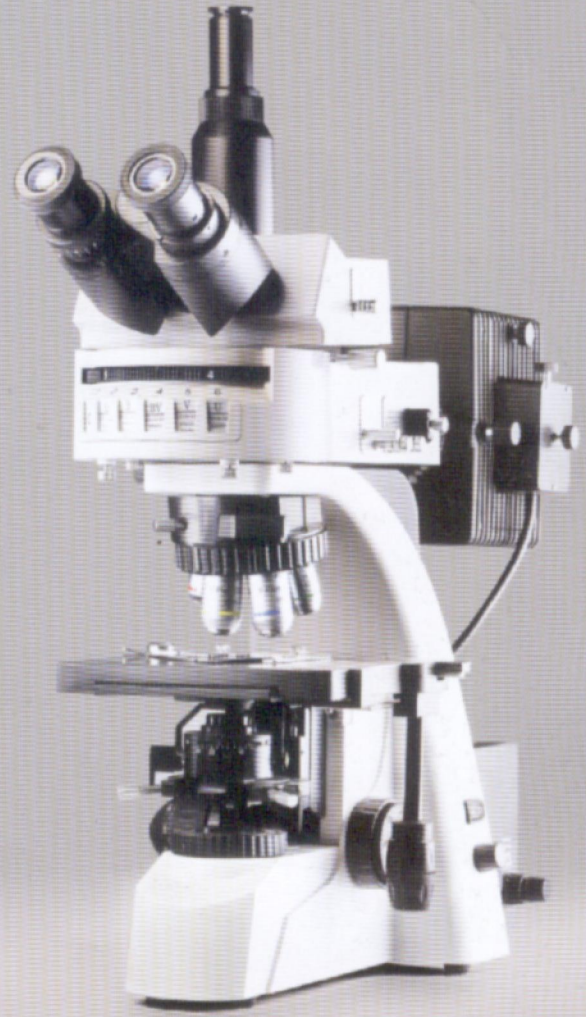
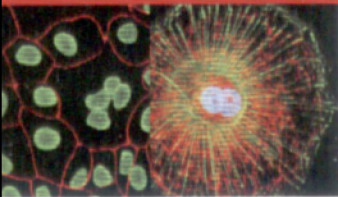
Standard Accessories

- 6V/20W halogen bulb, mercury lamp 100W, fuses, power cord, construction manual, dust cover, power supply for mercury lamp.



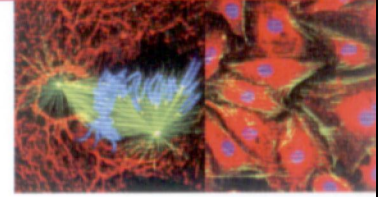
PREMIUM-FL

Trinocular
Fluorescence
Microscope



CLASSIC-FL

Trinocular
Fluorescence
Microscope



Technical Specifications

Trinocular Observation Head

- Siedentopf observation head inclined at 30° rotatable at 360°.
- Light path selector lever to direct either full light to observation head or 80% to vertical. Phototube and 20% to observation tube.
- Diopter adjustment ring on ocular tube.
- Interpupillary distance from 48mm to 75mm.

Eyepiece

Wide field eyepiece 10X (paired) FOV 22mm.

Objectives (Infinity corrected)

- FLUOR objective 4X
- FLUOR objective 10X
- FLUOR objective 40X (SL)
- FLUOR objective 100X (SL) Oil

Mechanical Body

- Co-axial focusing system with large knobs, PRE-FOCUSING LEVER & TENSION ADJUSTMENT RING.
- Reverse angle sextuple nosepiece on ball bearing.
- Mechanical stage is 185mmX142mm.
- The mechanical stage has low positioned co-axial controls on ball bearing guide ways.

Excitation Filter

B Excitation (400-490nm) standard
G Excitation (510-550nm) standard
UV Excitation (330-385nm) standard
V Excitation (400-410nm) standard

Light Source

Transmitted light source: 12V/100W tungsten halogen bulb. Epi-Fluorescence light source: 100W high pressure mercury lamp.

Standard Accessories

12V/100W halogen tungsten bulb. Styrofoam molded pack.

Trinocular Observation Head

- Siedentopf observation head inclined at 30° rotatable at 360°.
- Light path selector lever to direct either full light to observation head or 80% to vertical.
- Phototube and 20% to observation tube.
- Diopter adjustment ring on ocular tube.
- Interpupillary distance from 48mm to 75mm.

Eyepiece

Wide field eyepiece 10X (paired) FOV 22mm.

Objectives (Infinity corrected)

- APO FLUOR objective 4X
- APO FLUOR objective 10X
- APO FLUOR objective 40X (SL)
- APO FLUOR objective 100X (SL) Oil

Mechanical Body

- Co-axial focusing system with large knobs, PRE-FOCUSING LEVER & TENSION ADJUSTMENT RING.
- Reverse angle sextuple nosepiece on ball bearing.
- Mechanical stage is 180mmX160mm.
- The mechanical stage has low positioned co-axial controls on ball bearing guide ways.

Excitation Filter

B Excitation (400-490nm) standard
G Excitation (510-550nm) standard
UV Excitation (330-385nm) standard
V Excitation (400-410nm) standard

Light Source

Transmitted light source: 12V/100W tungsten halogen bulb. Epi-Fluorescence light source: 100W high pressure mercury lamp.

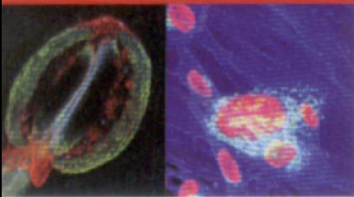
Standard Accessories

12V/100W halogen tungsten bulb. Styrofoam molded pack.



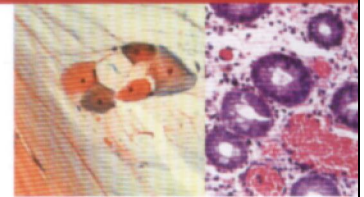
VICTORY-FL

Trinocular
Inverted
Fluorescence
Microscope



SELECT DUAL

Dual Head
Teaching
Microscope



Technical Specifications

Trinocular Observation Head

- Siedentopf observation head inclined at 30° rotatable at 360°.
- Diopter adjustment ring on ocular tube.
- Interpupillary distance from 52mm to 74mm.

Eyeiece

Eyeiece PWF 10X (paired) FOV 22mm.
Centering Telescope 10X.

Objectives Apo Achromat (Long working distance infinite)

- LWD Fluor Plan 4X/0.25X W.D 11.8mm
- LWD Fluor Plan 10X/ W.D. 8mm
- LWD Fluor Plan 20X/ W.D. 7.3mm
- LWD Plan Phase 20X/0.4 WD 7.3mm
- LWD Plan Phase 40X/0.6 WD 2.12mm
- Phase Annular for 20X & 40X Phase objectives.

Condenser

Long working distance 72mm condenser with N.A. 0.3 field diaphragm, pull out filter socket.

Mechanical Body

- Quadruple nosepiece.
- Co-axial coarse and fine focusing with large knobs. PRE-FOCUSING LEVER & TENSION ADJUSTMENT RINGS are on the focusing mechanism.
- Hard coated mechanical stage is 240mmX 260mm.
- Movement 30mmX75mm.

Excitation Filter

B (Blue), 460-490 nm (standard)
G (Green), 510-550 nm (standard)
UV (Ultra Violet), 330-385 nm (optional)
V (Violet), 400-410 nm (optional)

Reflected Light

100W DC mercury lamp power supply 230V.

Transmitted Light

6V/30W halogen lamp adjustable brightness 230V.

Standard Accessories

Electric cable, fuse, vinyl dust cover, operating manual.

Dual Binocular Observation Head (Two)

- Two compensation free binocular observation head inclined at 30° rotatable at 360°.
- Diopter adjustment ring on ocular tube.
- Interpupillary distance from 55mm to 75mm.

Eyeiece

Extra wide field 10X (paired) F.O.V. 18mm.

Objectives (Infinite Corrected)

- CCIS DIN Plan Achromatic 4X
- CCIS DIN Plan Achromatic 10X
- CCIS DIN Plan Achromatic 40X (S.L.)
- CCIS DIN Plan Achromatic 100X (S.L.) Oil

Illuminator

Koehler's illumination system with 6V-20W halogen lamp, adjustable brightness.

Mechanical Body

- Co-axial focusing system. PRE-FOCUSING LEVER & TENSION ADJUSTMENT RING. The slow motion has 1Div=0.02mm.
- Reverse angle quadruple nosepiece revolves on ball bearing.
- Mechanical stage size 180mmX150mm having low positioned co-axial controls on ball bearing guide ways.

Sub Stage Condenser

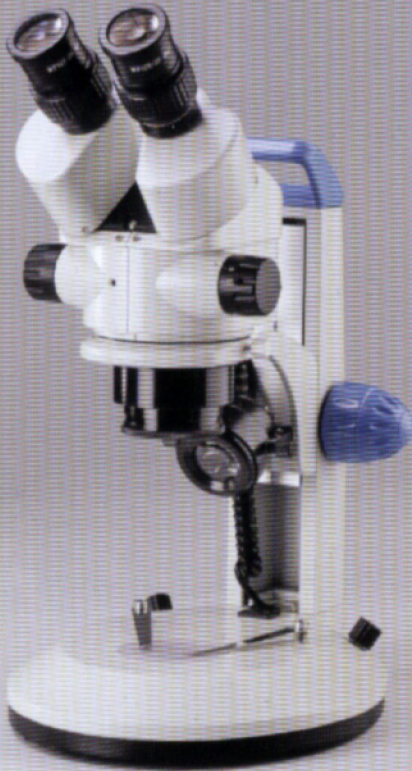
Abbe condenser N.A 1.25, swing out filter holder and iris diaphragm.

Pointer

Green LED pointer, brightness adjustable.

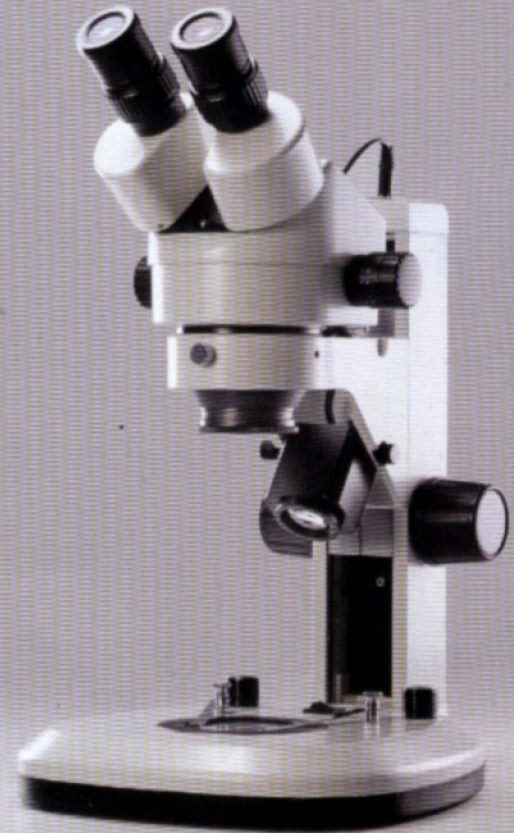
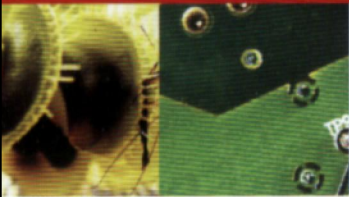
Standard Accessories

Blue filter, LED bulb, halogen bulb 6V/20W, dust over, operating manual and styrofoam molded pack.



ZOOMSTAR-I

Binocular
Stereozoom
Microscope



ZOOMSTAR-II

Trinocular
Stereozoom
Microscope



Technical Specifications

Binocular Observation Head

- Observation head inclined at 45° rotatable at 360°.
- Diopter adjustment ring on ocular tube.
- Interpupillary distance from 55mm to 75mm.

Eyepiece

Wide field 10X (paired)
F.O.V. 22mm.

Mechanical Body

- Lateral zoom control movement.
- Track stand with incident & transmitted LED lamps.
- Clip for holding specimen.
- Base size is 198mm X 250mm.

Zooming Range & Ratio

Zoom 0.7X to 4.5X with magnification ratio of 1:6.5.

Magnification Range

7X-45X.

Working Distance

100 mm.

Trinocular Observation Head

- Observation head inclined at 45° rotatable at 360°.
- Vertical phototube for micro photography.
- Diopter adjustment ring on ocular tube.
- Interpupillary distance from 54mm to 76mm.

Eyepiece

Wide field 10X (paired)
F.O.V. 22mm.

Zooming Range & Ratio

Zoom 0.7X to 4.5X with magnification ratio of 1:6.4

Mechanical Body

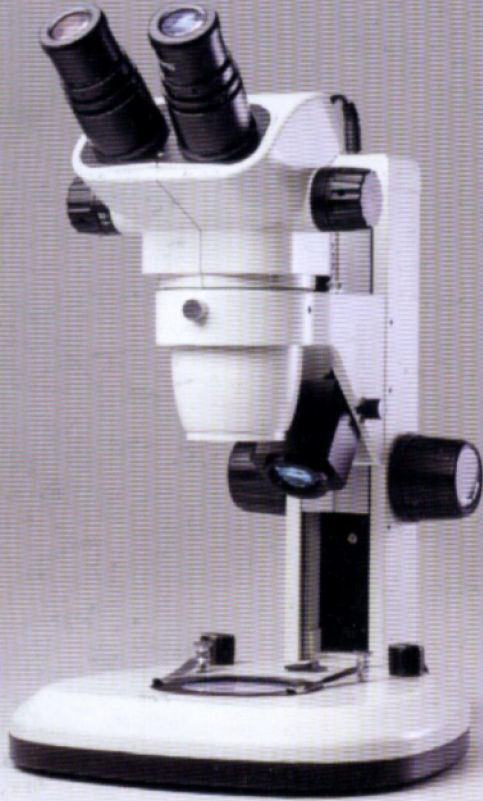
- Track stand with fan type base.
- Lateral zoom control movement.
- Incident and transmitted light system with LED lamp. The system regulated with transformer has separate intensity control knob.
- On/off switch provides flexibility to use either both light or any of them.
- Clip for holding specimen. Base size is 240mm X 280mm.

Magnification Range

7X-45X.

Working Distance

100 mm.



ZOOMSTAR-III



Trinocular
Stereozoom
Microscope



ZOOMSTAR-IV



Trinocular
Stereozoom
Microscope

Technical Specifications

Trinocular Observation Head

- Observation head inclined at 45° rotatable at 360°.
- Vertical phototube for micro photography.
- Diopter adjustment ring on ocular tube.
- Interpupillary distance from 54mm to 75mm.

Eyepiece

Wide field 10X (paired)
F.O.V. 22mm.

Zooming Range & Ratio

Zoom 0.67X to 4.5X with
magnification ratio of 1:6.7

Mechanical Body

- Track stand.
- Lateral zoom control movement.
- Reflected & transmitted LED Illuminator.
- The system regulated with transformer has separate intensity control knob.
- On/off switch.
- Clip for holding specimen.
- Base size is 198mm X 250mm.

Magnification Range

6.7X-45X.

Working Distance

105 mm.

Trinocular Observation Head

- Observation head inclined at 45° rotatable at 360°.
- Vertical phototube for micro photography.
- Diopter adjustment ring on ocular tube.
- Interpupillary distance from 57mm to 75mm.

Eyepiece

Wide field 10X (paired)
F.O.V. 22mm.

Zooming Range & Ratio

Zoom 0.8X to 5X with
magnification ratio of 6.3:1

Mechanical Body

- Incident and transmitted light system with LED lamp.
- The system regulated with transformer has intensity control knob.
- On/off switch to provide flexibility to use either both light or any of them.
- Clip for holding specimen.
- Lateral zoom control movement.

Magnification Range

8X-50X.

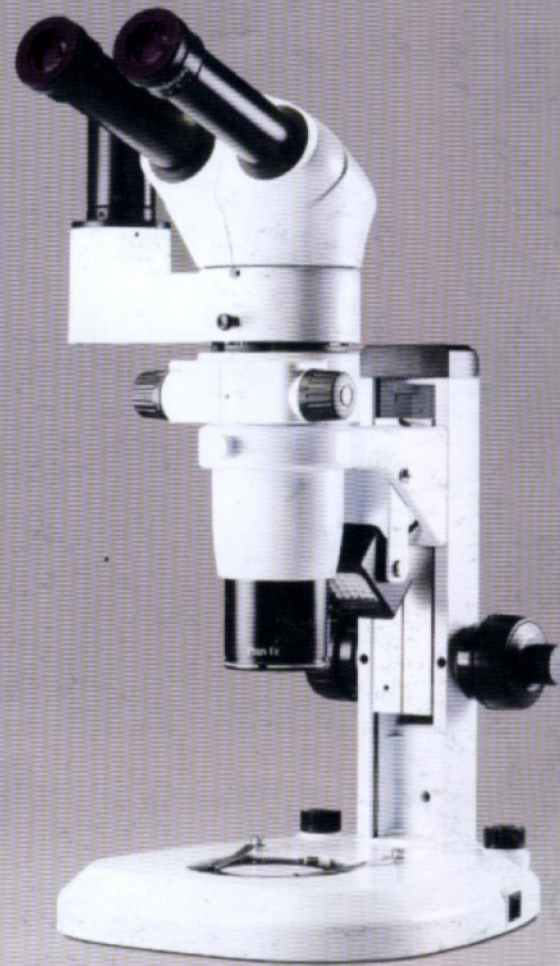
Working Distance

115 mm.



ZOOMSTAR-V

Trinocular
Stereo Zoom
Microscope



ZOOMSTAR-VI

Trinocular
Parallel Zoom
Microscope



Technical Specifications

Trinocular Observation Head

- Galileo optical system left & right parallel optical path.
- Observation head inclined from 45°.
- Vertical tube for micro photography.
- Diopter adjustment ring on ocular tube.
- Interpupillary distance from 55mm to 75mm.

Eyeiece

Wide field 10X (paired)
F.O.V. 22mm.

Zooming Range & Ratio

Zoom 0.8X to 5X with
magnification ratio of 6.3:1

Mechanical Body

- Incident and transmitted light system with LED lamp.
- The system regulated with transformer has intensity control knob.
- On/off switch to provide flexibility to use either both light or any of them.
- Clip for holding specimen.
- Lateral zoom control movement.

Magnification Range

8X-50X.

Working Distance

115 mm.

Binocular Observation Head

- Observation head inclined at 20°.
- Diopter adjustment ring on both ocular tube.
- Interpupillary distance from 55mm to 75mm.
- Lateral tube for digital camera.

Eyeiece

Focusable extra wide field
10X (paired) F.O.V. 22mm.

Zooming Range & Ratio

- Zoom 0.8X to 8X with magnification ratio of 1:10
- Plan achromatic objective 1X.

Mechanical Body

- Track stand with co-axial focusing mechanising.
- Incident and transmitted light system with LED lamp.
- The system regulated with transformer has intensity control knob.
- On/off switch to provide flexibility to use either both light or any of them.
- Clip for holding specimen.
- Lateral zoom control movement.

Magnification Range

8X-80X

Working Distance

78 mm.



STEREOMASTER



Binocular
Streo
Microscope



GEMSTAR



Trinocular
Gem &
Diamond
Microscope

Technical Specifications

Binocular Observation Head

- Observation head inclined at 45°
- Diopter adjustment ring on ocular tube.
- Interpupillary distance from 55mm to 75mm.

Eyepiece

Extra wide field
10X (paired) F.O.V. 22mm.

Objectives

2X & 4X

Magnification Range

20X-40X

Mechanical Body

- Incident and transmitted light system with LED lamps.
- The system regulated with transformer has intensity control knob.
- On/off switch to provide flexibility to use either both light or any of them.
- Clip for holding specimen.

Working Distance

90 mm.

Trinocular Observation Head

- Observation head can be tilted through full 90° from vertical to horizontal.
- Diopter adjustment ring on both ocular tube.
- Interpupillary distance from 55mm to 75mm.
- Vertical tube for digital camera.

Eyepiece

Extra wide field 10X
(paired) F.O.V. 22mm.

Zooming Range & Ratio

Zoom 0.8X to 5X with
magnification ratio of 6.3:1

Magnification Range

8X-50X

Mechanical Body

- The system regulated with transformer has intensity control knob.
- On/off switch to provide flexibility to use either both light or any of them.
- Lateral zoom control movement.
- The microscope body can be rotated through full 360°.
- Adjustable tweezer for holding Gem& Diamond.

Epi-illumination

Fluorescent tube mounted on flexible arm. Iris diaphragm mounted on the top of dark field condenser. Trans-illumination intensity controlled bright field and dark field 30W halogen lamp.

Working Distance

115 mm.



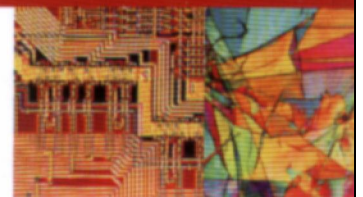
DMI EDUCATOR

Binocular
Inverted
Materials
Microscope



DMI CROWN

Trinocular
Inverted
Materials
Microscope



Technical Specifications

Binocular Observation Head

- Siedentopf observation head inclined at 45°
- Diopter adjustment ring on ocular tube.
- Interpupillary distance from 50mm to 75mm.

Eye-piece

Wide field eye-piece 10X (paired)
F.O.V. 18mm.

Objectives (Infinity corrected)

- M Long working distance plan 10X
- M Long working distance plan 20X
- M Long working distance plan 40X (S.L.)

Mechanical Body

- Co-axial focusing system with large knobs, pre-focusing lever & tension adjustment ring.
- Quadruple nose-piece on ball bearing.
- Mechanical stage is 182mm X 195mm.
- The Mechanical stage has low positioned co-axial controls on ball bearing guide ways.

Illuminator

The Epi illuminator has 3V LED lamp with variable brightness control.

Standard Accessories

Blue, green & yellow filters, operating manual, dust cover, styrofoam molded pack.

Trinocular Observation Head

- Siedentopf observation head inclined at 45°
- Vertical phototube for micro photography.
- Diopter adjustment ring on ocular tube.
- Interpupillary distance from 55mm to 75mm.

Eye-piece

Wide field eye-piece 10X (paired) F.O.V. 20mm.

Objectives (Infinity corrected)

- M Long working distance plan 5X
- M Long working distance plan 10X
- M Long working distance plan 20X
- M Long working distance plan 50X (S.L.)

Illuminator

The Epi illuminator has 6V-30W halogen lamp with variable brightness control.

Mechanical Body

- Co-axial focusing system with large knobs, PRE-FOCUSING LEVER & TENSION ADJUSTMENT RING.
- Quadruple nose-piece on ball bearing.
- Mechanical stage is 180mm X 165mm.
- The Mechanical stage has low positioned co-axial controls on ball bearing guide ways.

Polarizing Outfit

Analyzer rotatable at 360°. Polarizing & Analyzer can be slide in/out of the optical path.

Standard Accessories

6V/20W halogen tungsten bulb, blue, green & yellow filters, operating manual, dust cover, styrofoam molded pack.



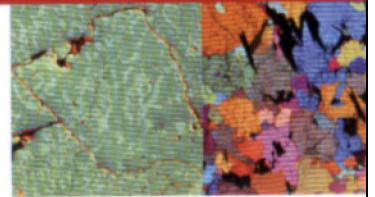
DMI PREMIUM

Trinocular
Inverted
Metallurgical
Microscope



DMI CLASSIC

Trinocular
Inverted
Materials
Microscope



Technical Specifications

Trinocular Observation Head

- Siedentopf observation head inclined at 45°.
- Vertical phototube for micro photography.
- Diopter adjustment ring on ocular tube.
- Interpupillary distance from 48mm to 75mm.

Eyepiece

Wide field eyepiece 10X (paired)
F.O.V. 20mm.

Objectives (Infinity corrected)

- M Long Working Distance Plan Achromatic 5X
- M Long Working Distance Plan Achromatic 10X
- M Long Working Distance Plan Achromatic 20X
- M Long Working Distance Plan Achromatic 50X (S.L.)
- M Long Working Distance Plan Achromatic 100X (S.L.) Dry

Mechanical Body

- Co-axial focusing system with large knobs, PRE-FOCUSING LEVER & TENSION ADJUSTMENT RING.
- Quadruple nosepiece on ball bearing.
- Mechanical stage is 180mmX155mm.
- The Mechanical stage has low positioned co-axial controls on ball bearing guide ways.

Illuminator

The Epi illuminator has 3W LED lamp adjustable brightness.

Polarizing Outfit

Analyzer rotatable at 360°. Polarizing & Analyzer can be slide in/out of the optical path.

Standard Accessories

Blue, Green & Yellow filters. Styrofoam molded pack.

Trinocular Observation Head

- Siedentopf observation head inclined at 45°.
- Vertical phototube for micro photography.
- Diopter adjustment ring on ocular tube.
- Interpupillary distance from 52mm to 75mm.

Eyepiece

Wide field eyepiece 10X (paired)
F.O.V. 22mm.

Objectives (Infinity corrected)

- M Long working distance plan 10X WD 11.0mm
- M Long working distance plan 20X WD 9.0mm
- M Long working distance plan 50X WD 3.8mm
- M Long working distance plan 100X (S.L.) Dry

Mechanical Body

- Co-axial focusing system with large knobs, PRE-FOCUSING LEVER & TENSION ADJUSTMENT RING.
- Quadruple nosepiece on ball bearing.
- Mechanical stage is 240mm X 180mm.
- Mechanical stage has low positioned co-axial controls on ball bearing guide ways.

Illuminator

Epi-Koehler's illumination. Aperture iris diaphragm and filed iris diaphragm 12V/50W AC 85-230V. Adjustable brightness. Filter wheel fixed in light path with blue, green & yellow filter.

Polarizing Outfit

Analyzer rotatable at 360°. Polarizing & analyzer can be slide in/out of the optical path.

Standard Accessories

12V/50W halogen tungsten bulb, operating manual, dust cover, styrofoam molded pack.



DMI VICTORY

Trinocular
Inverted
Materials
Microscope



DG VICTORY

Trinocular Inverted
Dark/Bright Field
Materials
Microscope with DIC



Technical Specifications

Trinocular Observation Head

- Siedentopf observation head inclined at 45°.
- Diopter adjustment ring on ocular tube.
- Interpupillary distance from 50mm to 75mm.

Eye-piece

Wide field eyepiece 10X (paired) F.O.V. 22mm.

Objectives (Infinity corrected)

- M Long working distance plan 10X WD 11.0mm
- M Long working distance plan 20X WD 9.0mm
- M Long working distance plan 50X WD 3.8mm
- M Long working distance plan 100X (S.L.) Dry

Illuminator

Epi-Koehler's illumination. Aperture iris diaphragm and filed iris diaphragm 12V/30W halogen lamp. Adjustable brightness. Filter wheel fixed in light path with blue, green & yellow filter.

Mechanical Body

- Co-axial focusing system with large knobs, PRE-FOCUSING LEVER & TENSION ADJUSTMENT RING. Quadruple nosepiece on ball bearing.
- Mechanical stage is 242mm X 200mm.
- Mechanical stage has low positioned co-axial controls on ball bearing guide ways.
- Side port with phototube for micro photography.

Polarizing Outfit

Analyzer rotatable at 360°. Polarizing & Analyzer can be slide in/out of the optical path.

Standard Accessories

12V/30W halogen tungsten bulb, operating manual, dust cover, styrofoam molded pack.

Trinocular Observation Head

- Siedentopf observation head inclined at 45°.
- Vertical phototube for micro photography.
- Light path selector lever to direct either full light to observation head or 80% to vertical phototube and 20% to observation tube.

Eye-piece

Wide field eyepiece 10X (paired) F.O.V. 22mm.

Objectives (Infinity corrected) Dark/Bright Field

- BD Long working distance plan 10X
- BD Long working distance plan 20X
- BD Long working distance plan 50X
- BD Long working distance plan 100X (DRY)

Differential Interference Contrast

DIC filter for 5X, 10X, 20X, 50X 100X

Mechanical Body

- Co-axial focusing system with large knobs, pre-focusing lever & tension adjustment ring.
- Quadruple nosepiece on ball bearing.
- Mechanical stage is 226mm X 178mm.
- The Mechanical stage has low positioned co-axial controls on ball bearing guide ways.

Illuminator

The Epi illuminator has 12V-50W halogen lamp with variable brightness control.

Polarizing Outfit

Analyzer rotatable at 360°. Polarizing & Analyzer can be slide in/out of the optical path.

Standard Accessories

6V/20W halogen tungsten bulb, blue, green & yellow filters, operating manual, dust cover, styrofoam molded pack.



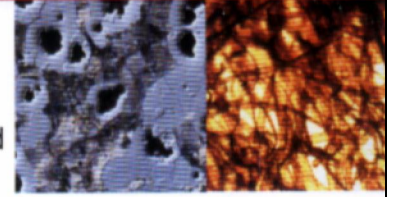
DMI PRIME

Trinocular
Upright
Materials
Microscope



DG CLASSIC

Trinocular
Materials
Dark/Bright Field
Microscope



Technical Specifications

Trinocular Observation Head

- Siedentopf observation head inclined at 30°
- Vertical phototube for micro photography.
- Diopter adjustment ring on ocular tube.
- Interpupillary distance from 55mm to 75mm.

Eyeiece

- Wide field eyepiece 10X (paired)
- F.O.V. 18mm.

Objectives (Infinity corrected)

- M Long working distance plan 5X
- M Long working distance plan 10X
- M Long working distance plan 20X
- M Long working distance plan 50X (S.L.)

Illuminator

- The Epi illuminator has 6V-20W halogen lamp with variable brightness control.

Mechanical Body

- Co-axial focusing system with large knobs, PRE-FOCUSING LEVER & TENSION ADJUSTMENT RING.
- Quadruple nosepiece on ball bearing.
- Mechanical stage is 210mm X 140mm.
- The Mechanical stage has low positioned co-axial controls on ball bearing guide ways.

Polarizing Outfit

- Analyzer rotatable at 360°. Polarizing & Analyzer can be slide in/out of the optical path.

Standard Accessories

- 6V/20W halogen tungsten bulb, operating manual, dust cover, styrofoam molded pack.

Trinocular Observation Head

- Siedentopf observation head inclined at 30° rotatable at 360°.
- Vertical phototube for micro photography.
- Diopter adjustment ring on ocular tube.
- Interpupillary distance from 55mm to 75mm

Eyeiece

- Wide field eyepiece 10X (paired)
- F.O.V. 22mm

Objectives (Infinity corrected)

Dark/Bright Field

- BDM Long working distance plan 5X
- BDM Long working distance plan 10X
- BDM Long working distance plan 20X
- BDM Long working distance plan 50X (SL)

Mechanical Body

- Co-axial focusing system with large knobs, PRE-FOCUSING LEVER & TENSION ADJUSTMENT RING.
- Quadruple nosepiece on ball bearing.
- Mechanical stage is 180mm X 140mm.
- Mechanical stage has co-axial controls on ball bearing guide ways.

Illuminator

- The Epi illuminator has 12V-50W halogen lamp with variable brightness control.

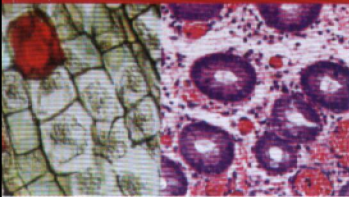
Standard Accessories

- 12V/50W Halogen tungsten bulb, Operating manual, Dust cover, Styrofoam molded pack.



EDUCATOR-e

Digital
Monocular
Microscope



PRIME-e

Digital
Binocular
Microscope



Technical Specifications

Digital Monocular Observation Head

- Built-in-head 2 Mega pixels digital camera & USB 2.0 output.
- Monocular head inclined at 45° rotatable at 360°.

Eyeiece

Wide field 10X F.O.V. 18mm.

Objectives (Finite)

- DIN Achromatic 4X
- DIN Achromatic 10X
- DIN Achromatic 40X (S.L.)
- DIN Achromatic 100X Oil (S.L.)

Sub Stage Condenser

Abbe condenser N.A.1.25 swing out filter holder, Iris diaphragm.

Mechanical Body

- Co-axial focusing system. Quadruple nosepiece.
- Mechanical stage size 120mm X 120mm having low positioned co-axial controls on ball bearing. Cross movement 55mm X 75mm.
- Built-in-base illumination system with LED lamp.

Standard Accessories

Blue & Grey filters, styro form molded pack.

Digital Binocular Observation Head

- Built-in-head 3 Mega pixels digital camera & USB 2.0 output.
- Siedentopf observation head inclined at 30° rotatable at 360°.
- Diopter adjustment ring on ocular tube.
- Interpupillary distance from 55mm to 75mm.

Eyeiece

EWf 10X (paired) F.O.V. 20mm.

Objectives (Infinity Corrected)

- E-Plan Achromatic 4X
- E-Plan Achromatic 10X
- E-Plan Achromatic 40X (S.L.)
- E-Plan Achromatic 100X Oil (S.L.)

Mechanical Body

- Co-axial focusing system. PRE-FOCUSING LEVER & TENSION ADJUSTMENT RING. The slow motion has 1Div=0.02mm.
- Reverse angle quadruple nosepiece revolves on ball bearing.
- Mechanical stage size 145mmX140mm having low positioned controls.
- The built-in-base illumination system with 3V LED lamp and power supply.
- Cross movement 55mm X 75mm. Blue filter fixed in the base collector.

Sub Stage Condenser

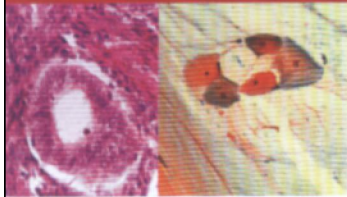
Abbe condenser N.A. 1.25 and iris diaphragm.

Standard Accessories

Dust cover, operating manual and styrofoam molded pack.



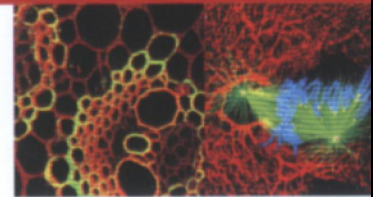
PREMIUM-e



**Digital
Research
Microscope**



FLUOREX-e



**Digital
Fluorescence
Microscope**

Technical Specifications

Digital Binocular Observation Head

- Built-in-head 5 Mega pixels digital camera & USB 2.0 output.
- Siedentopf observation head inclined at 30° rotatable at 360°.
- Diopter adjustment ring on ocular tube.
- Interpupillary distance from 48mm to 75mm.

Eye-piece

Wide field eye-piece 10X (paired)
F.O.V. 22mm.

Objectives (Infinite)

- CCIS Plan Achromatic 1.5X
- CCIS Plan Achromatic 4X
- CCIS Plan Achromatic 10X
- CCIS Plan Achromatic 20X
- CCIS Plan Achromatic 40X (S.L.)
- CCIS Plan Achromatic 100X Oil (S.L.)

Mechanical Body

- Co-axial focusing control with large knob, PRE-FOCUSING LEVER & TENSION ADJUSTMENT RING.
- Reverse angle sextuple nose-piece revolving on ball bearings.
- Mechanical stage size 185mmX142mm & having low positioned co-axial controls on ball bearing guide ways.

Illuminator

Koehler's illumination system with 12V-50W halogen lamp, adjustable brightness.

Sub Stage Condenser

Swing out front lens, abbe condenser N.A. 0.9/1.25, filter holder and iris diaphragm.

Standard Accessories

12V/50W halogen tungsten bulb, dust cover, blue filter, operating manual and styrofoam molded pack.

Digital Binocular Observation Head

- Built-in-head 3 Mega pixels digital camera & USB 2.0 output.
- Siedentopf observation head inclined at 30° rotatable at 360°.
- Diopter adjustment ring on ocular tube.
- Interpupillary distance from 55mm to 75mm.

Eye-piece

Eye-piece W.F. 10X (paired) FOV 18mm.

Objectives (Infinity corrected)

- Plan Achromatic 4X
- Plan Achromatic 10X
- Plan Achromatic 40X (SL)
- Plan Achromatic 100X (SL)

Excitation Filters

B Excitation (420nm-485nm) standard
G Excitation (460nm-550nm) standard.

Sub Stage Condenser

N.A.1.25 Abbe condenser with iris diaphragm.

Mechanical Body

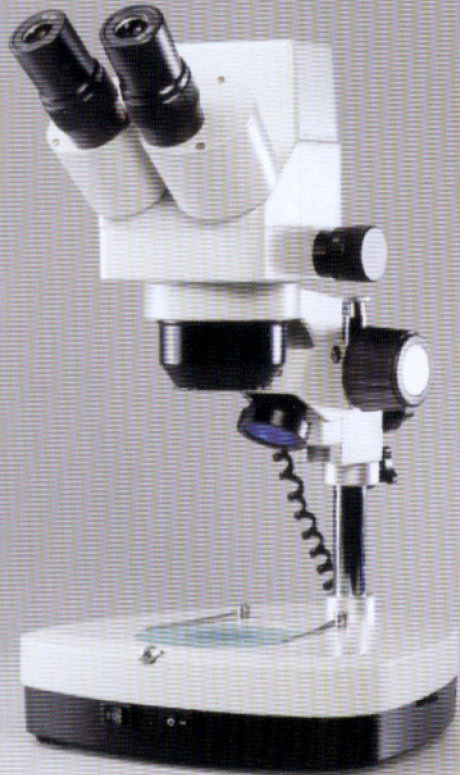
- Reverse angle quadruple nose-piece revolves on ball bearing.
- Co-axial focusing system. PRE-FOCUSING LEVER & TENSION ADJUSTMENT RING are on right & left side respectively.
- The Mechanical stage is 145mmX140mm and has co-axial low positioned controls.
- The built-in-base illumination system incorporated 6V/20W Halogen tungsten lamp.
- Cross movement 55mm X 75mm.
- Blue filter is fixed in the base collector.

Light Sources

Transmitted light source: 6V/20W tungsten halogen bulb. Epi-Fluorescence light source: 100W high pressure mercury lamp.

Standard Accessories

6V/20W halogen bulb, mercury lamp 100W, fuses, power cord, construction manual, dust cover, power supply for mercury lamp.

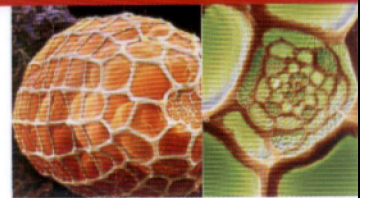


ZOOMSTAR-I e



Digital Stereozoom Microscope

ZOOMSTAR-IV e



Digital Stereozoom Microscope

Technical Specifications

Digital Binocular Observation Head

- Built-in-head 1.3 Mega pixels digital camera & USB 2.0 output.
- Observation head inclined at 45°. Rotatable at 360°.
- Diopter adjustment ring on ocular tube.
- Interpupillary distance from 55mm to 75mm.

Eyepiece

Wide field Eyepiece 10X (paired)
FOV 22mm

Zooming Range & Ratio

Zoom 0.7X to 4.5X with magnification ratio of 6:1

Mechanical Body

- Lateral zoom control movement. Incident and transmitted light system with LED lamp.
- The system regulated with transformer has intensity control knob.
- On/off switch provides flexibility to use either both light or any of them.
- Clip for holding specimen.
- Base size is 260mm X 290mm.

Working Distance

98mm.

Magnification Range

7X - 45X.

Digital Binocular Observation Head

- Built-in-head 3 Mega pixels digital camera & USB 2.0 output.
- Observation head inclined at 45°.
- Diopter adjustment ring on ocular tube.
- Interpupillary distance from 57mm to 75mm.

Eyepiece

Wide field 10X (paired)
F.O.V. 22mm.

Zooming Range & Ratio

Zoom 0.8X to 5X with magnification ratio of 1:6.3

Mechanical Body

- Incident and transmitted light system with LED lamp.
- The system regulated with transformer has intensity control knob.
- On/off switch to provide flexibility to use either both light or any of them.
- Clip for holding specimen.
- Lateral zoom control movement.

Working Distance

115mm.

Magnification Range

8X - 50X



DIGI ZOOMSTAR-I

Digital
Sterozoom
Microscope
with 7" LCD



DIGI ZOOMSTAR-VI

Digital
Sterozoom
Microscope
with External
8" LCD



Technical Specifications

Digital Binocular Observation Head With 7" LCD Screen Fixed On Head

- Observation head inclined at 45° with built in-head camera. 7" LCD view available on-line.
- Diopter adjustment ring on both ocular tube.
- Interpupillary distance from 55mm to 75mm.

Eye-piece

Wide field Eye-piece 10X (paired) FOV 22mm

Zooming Range & Ratio

Zoom 0.7X to 4.5X with magnification ratio of 6:1

Mechanical Body

- Incident and transmitted light system with LED lamp.
- The system regulated with transformer has intensity control knob.
- On/off switch to provide flexibility to use either both light or any of them.
- Clip for holding specimen.
- Lateral zoom control movement.

Magnification Range

7X to 45X

Working Distance

105mm

Binocular Observation Head with LCD Camera on Vertical tube.

- Siedentopf binocular observation head & tiltable from 0° to 35°. Dioptic adjustment on ocular. Interpupillary distance from 52 to 75mm.
- 8 inch TFT screen with resolution of 800x600 fixed on camera body.
- Digital camera is fixed with 3.0 Megapixel CMOS sensor.
- Built-in-memory storage slot for SD card maximum storage upto 8 GB.
- USB-2, AV out put for interface with external LCD monitor, computer & LCD projector.

Eye-piece

Focusable extra wide field 10X (paired) F.O.V. 22mm.

Mechanical Body

- Track stand with co-axial focusing mechanising.
- Incident and transmitted light system with LED lamp.
- The system regulated with transformer has intensity control knob.
- On/off switch to provide flexibility to use either both light or any of them.
- Clip for holding specimen.
- Lateral zoom control movement.

Zooming Range & Ratio

- Zoom 0.8X to 8X with magnification ratio of 1:10
- Plan achromatic objective 1X.

Magnification Range

8X-80X

Working Distance

78 mm.



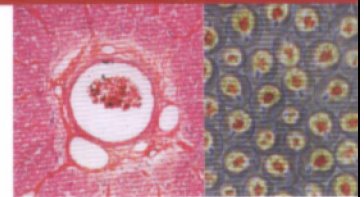
DIGI PRIME

Digital
Biological
Microscope
with 8" LCD



DIGI CLASSIC

Digital
Projection
Microscope



Technical Specifications

LCD Binocular Observation Head

- Simultaneous view on LCD screen and in traditional observation head.
- Siedentopf binocular observation head. Dioptoric adjustment on ocular. Interpupillary distance from 55mm to 75mm. Real time preview on 8 inch TFT screen with resolution of 800x600.
- Facility for on screen still capture, short videos, digital enlargement, searching & printing directly without computer.
- Built-in-memory storage slot for SD card maximum storage upto 4GB.
- Built-in 5 megapixel camera with auto exposure. USB-2, AV output for interface with external LCD monitor, Computer & LCD projector.
- On screen record of data, month, day, hour & minute.
- Grid can be viewed for various analysis.

Eyepiece

EWF 10X (paired) F.O.V. 18mm.

Mechanical Body

- Co-axial focusing system. PRE-FOCUSING LEVER & TENSION ADJUSTMENT RING. The slow motion has 1Div=0.02mm.
- Reverse angle quadruple nosepiece revolves on ball bearing.
- Mechanical stage size 145mmX140mm having low positioned controls.
- The built-in-base illumination system with 3V LED lamp and power supply.
- Cross movement 55mm X 75mm. Blue filter fixed in the base collector.

Objectives (Infinity Corrected)

- E-Plan Achromatic 4X
- E-Plan Achromatic 10X
- E-Plan Achromatic 40X(S.L)
- E-Plan Achromatic 100X(S.L)

Sub Stage Condenser

Abbe condenser N.A. 1.25 and iris diaphragm.

Standard Accessories

Dust cover, operating manual and styrofoam molded pack.

LCD Binocular Observation Head

- Simultaneous view on LCD screen and in traditional observation head.
- Siedentopf binocular observation head. Dioptoric adjustment on ocular. Interpupillary distance from 48mm to 75mm. Real time preview on 8 inch TFT screen with resolution of 800x600.
- Facility for on screen still capture, short videos, digital enlargement, searching & printing directly without computer.
- Built-in-memory storage slot for SD card maximum storage upto 4GB.
- Built-in 5 megapixel camera with auto exposure. USB-2, AV output for interface with external LCD monitor, Computer & LCD projector.
- On screen record of data, month, day, hour & minute.
- Grid can be viewed for various analysis.

Eyepiece

Wide field eyepiece 10X (paired) F.O.V. 18mm.

Mechanical Body

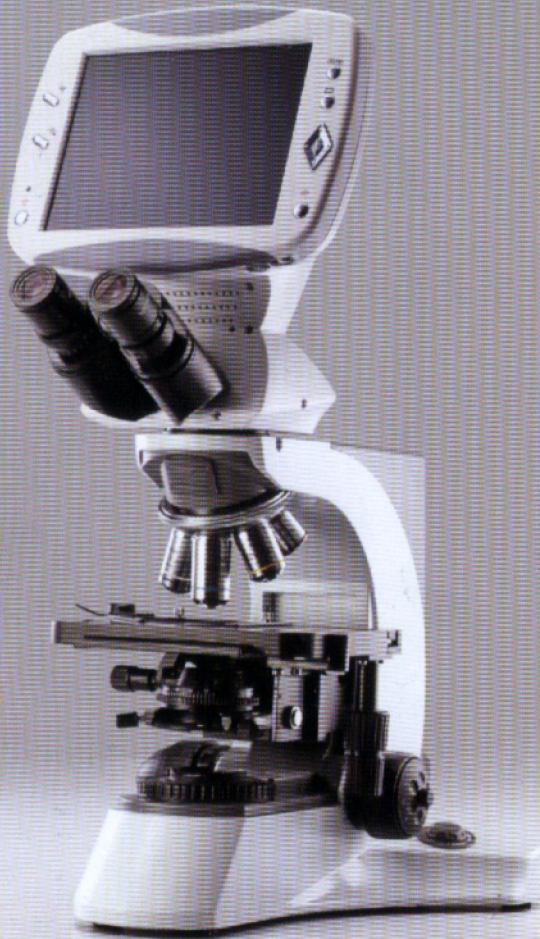
- Co-axial focusing system. PRE-FOCUSING LEVER & TENSION ADJUSTMENT RING.
- Reverse angle quadruple nosepiece revolves on ball bearing.
- Rackless ceramic coated mechanical stage size 193mmX155mm. having low positioned co-axial controls.
- The illuminator incorporates 3W LED lamp and has adjustable iris diaphragm.
- Provision to incorporate Polarizer / Analyzer.

Objectives (Infinity Corrected)

- CCIS Infinite Plan 4X
- CCIS Infinite Plan 10X
- CCIS Infinite Plan 40X
- CCIS Infinite Plan 100X(S.L)

Standard Accessories

Dust cover, operating manual, blue filter and styrofoam molded pack.



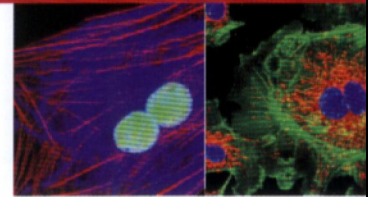
DIGI PREMIUM

Digital
Research
Microscope
with 8" LCD



DIGI PREMIUM-FL

Digital
Fluorescence
Microscope
with 8" LCD



Technical Specifications

LCD Binocular Observation Head

- Simultaneous view on LCD screen and in traditional observation head.
- Siedentopf binocular observation head. Dioptoric adjustment on ocular. Interpupillary distance from 48mm to 75mm. Real time preview on 8 inch TFT screen with resolution of 800x600.
- Facility for on screen still capture, short videos, digital enlargement, searching & printing directly without computer.
- Built-in-memory storage slot for SD card maximum storage upto 4GB.
- Built-in 5 megapixel camera with auto exposure. USB-2, AV output for interface with external LCD monitor, Computer & LCD projector.
- On screen record of data, month, day, hour & minute.
- Grid can be viewed for various analysis.

Eyepiece

Wide field eyepiece 10X (paired) F.O.V. 18mm.

Mechanical Body

- Co-axial focusing control with large knob, PRE-FOCUSING LEVER & TENSION ADJUSTMENT RING.
- Reverse angle quintuple nosepiece revolving on ball bearings.
- Mechanical stage size 185mmX142mm & having low positioned co-axial controls on ball bearing guide ways.

Objectives (Infinity Corrected)

- CCIS Plan Achromatic 4X
- CCIS Plan Achromatic 40X (S.L.)
- CCIS Plan Achromatic 10X
- CCIS Plan Achromatic 100X Oil (S.L.)

Illuminator

Koehler's illumination system with 12V-30W halogen lamp, adjustable brightness.

Sub Stage Condenser

Swing out front lens, abbe condenser N.A. 0.9/1.25, filter holder and iris diaphragm.

Standard Accessories

12V/30W halogen tungsten bulb, dust cover, blue filter, operating manual and styrofoam molded pack.

LCD Binocular Observation Head

- Simultaneous view on LCD screen and in traditional observation head.
- Siedentopf binocular observation head. Dioptoric adjustment on ocular. Interpupillary distance from 48mm to 75mm. Real time preview on 8 inch TFT screen with resolution of 800x600.
- Facility for on screen still capture, short videos, digital enlargement, searching & printing directly without computer.
- Built-in-memory storage slot for SD card maximum storage upto 4GB.
- Built-in 5 megapixel camera with auto exposure. USB-2, AV output for interface with external LCD monitor, Computer & LCD projector.
- On screen record of data, month, day, hour & minute.
- Grid can be viewed for various analysis.

Eyepiece

Wide field eyepiece 10X (paired) F.O.V. 18mm.

Mechanical Body

- Co-axial focusing system with large knobs, PRE-FOCUSING LEVER & TENSION ADJUSTMENT RING.
- Reverse angle sextuple nosepiece on ball bearing.
- Mechanical stage is 185mmX142mm.
- The mechanical stage has low positioned co-axial controls on ball bearing guide ways.

Objectives (Infinity corrected)

- FLUOR objective 4X
- FLUOR objective 40X (SL)
- FLUOR objective 10X
- FLUOR objective 100X (SL) Oil

Excitation Filters

- B Excitation (400-490nm) standard
- UV Excitation (330-385nm) optional
- G Excitation (510-550nm) standard
- V Excitation (400-410 nm) optional

Light Sources

Transmitted light source: 12V/100W tungsten halogen bulb. Epi-Fluorescence light source: 100W high pressure mercury lamp.

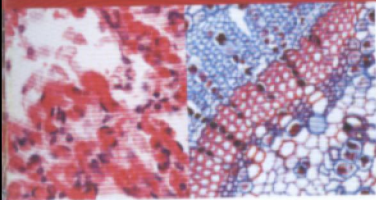
Standard Accessories

12V/30W halogen bulb, 100W Mercury lamp, styrofoam molded pack.



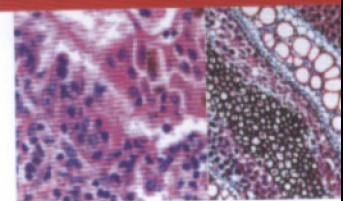
DIGI SELECT-I

Digital
Biological
Microscope
with 8" LCD



DIGI SELECT-II

Digital
Biological
Microscope
with 8"
Tablet PC.



Technical Specifications

Binocular Observation Head with LCD Display

- Siedentopf observation head inclined at 30° rotatable at 360°.
- 8 inch LCD colour screen system.
- Built-in-head digital camera with BNC output with 3 M.P. Resolution.
- Internal media card reader/writer.

Eyeiece

Wide field 10X (paired) F.O.V. 18mm.

Objectives (Infinity Corrected)

- CCIS Plan Achromatic 4X
- CCIS Plan Achromatic 10X
- CCIS Plan Achromatic 40X (S.L.)
- CCIS Plan Achromatic 100X Oil (S.L.)

Mechanical Body

- Co-axial focusing system. PRE-FOCUSING LEVER & TENSION ADJUSTMENT RING. The slow motion has 1Div=0.002mm.
- Reverse angle quadruple nosepiece revolves on ball bearing.
- Mechanical stage size 125mmX135mm having low positioned co-axial controls on ball bearing guide ways.
- The transmitted light illumination has LED illumination with intensity control knob.

Sub Stage Condenser

Abbe condenser N.A. 1.25 and iris diaphragm.

Standard Accessories

Gray & blue filters, STYRO FOAM molded pack.

Binocular Observation Head with LCD Display

- Siedentopf observation head inclined at 30° rotatable at 360°. 8 inch LCD screen. Built-in-head digital camera with RCA, S-Video & USB 2.0 output with 5 Mega pixels resolution.
- Internal media card reader/writer.

Eyeiece

Wide field 10X (paired) F.O.V. 18mm.

Objectives (Infinity Corrected)

- CCIS Plan Achromatic 4X
- CCIS Plan Achromatic 10X
- CCIS Plan Achromatic 40X (S.L.)
- CCIS Plan Achromatic 100X Oil (S.L.)

Mechanical Body

- Co-axial focusing system. PRE-FOCUSING LEVER & TENSION ADJUSTMENT RING. The slow motion has 1Div=0.002mm.
- Reverse angle quadruple nosepiece revolves on ball bearing.
- Mechanical stage size 125mmX135mm having low positioned co-axial controls on ball bearing guide ways.
- The transmitted illuminator has 3V LED lamp with intensity control knob.

Sub Stage Condenser

Abbe condenser N.A. 1.25 and iris diaphragm.

Standard Accessories

Gray & blue filters, dust cover, operating manual and styrofoam molded pack.



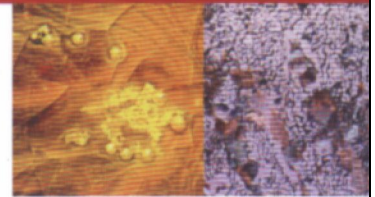
DIGI EDUCATOR-m

Digital
Material
Microscope
with 3.6" LCD



DIGI CROWN-m

Digital
Material
Microscope
with 10" LCD



Technical Specifications

Binocular Observation Head & LCD Camera

- Binocular siedentopf observation head inclined at 45°.
- Diopter adjustment ring on ocular tube.
- Interpupillary distance from 55mm to 75 mm.
- LCD camera fixed on one ocular with 3.5" TFT screen, 3 Mega pixel camera, built-in-memory storage slot, USB 2.0 output on board capture etc.

Eyepiece

- Wide field eyepiece 10X (paired)
F.O.V. 18mm.

Objectives (finite)

- DIN Plan 4X
- DIN Plan 10X
- DIN Plan 40X

Mechanical Body

- Co-axial focusing system with large knobs, PRE-FOCUSING LEVER & TENSION ADJUSTMENT RING.
- Quadruple nosepiece on ball bearing.
- Mechanical stage is 153mmX204mm and have co-axial controls on ball bearing guide ways. Circular disc rotatable at 360°.

Illuminator

Epi-illuminator has 6V-20W halogen lamp with intensity control knob. Polarising attachment fixed in Epi-illuminator arm.

Standard Accessories

6V/20W Halogen tungsten bulb. Styro foam molded pack.

Digital Trinocular Observation Head

- Binocular siedentopf observation head inclined at 45°.
- Phototube for micro photography.
- Diopter adjustment ring on ocular tube.
- Interpupillary distance from 55mm to 75mm.
- 5 mega pixel digital camera with 10" LCD screen.

Eyepiece

- Wide field eyepiece 10X (paired)
FOV 20mm

Objectives (Infinity Corrected)

- M Long working distance plan 5X
- M Long working distance plan 10X
- M Long working distance plan 20X
- M Long working distance plan 50X (S.L.)

Mechanical Body

- Co-axial focusing system with large knobs, pre-focusing lever & tension adjustment ring.
- Quadruple nosepiece on ball bearing.
- Mechanical stage is 180mm X 165mm.
- The Mechanical stage has low positioned co-axial controls on ball bearing guide ways.

Illuminator

The Epi illuminator has 6V-20W Halogen lamp with varibale brightness control.

Polarizing Outfit

Analyzer rotatable at 360°. Polarizing & analyzer can be slide in/out of the optical path.

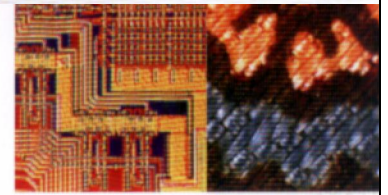
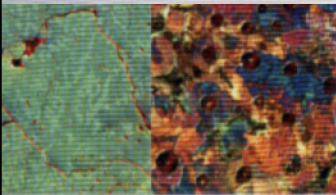
Standard Accessories

6V/20W halogen tungsten bulb, blue, green & yellow filters, operating manual, dust cover, styro foam molded pack.



Digital
Materials
Microscope
with 8" LCD

Digital
Materials
Microscope
with 8" LCD



Technical Specifications

LCD Binocular Observation Head

- Simultaneous view on LCD screen and in traditional observation head.
- Siedentopf binocular observation head. Dioptric adjustment on ocular. Interpupillary distance from 55 to 75mm. Real time preview on 8 inch TFT screen with resolution of 800x600.
- Facility for on screen still capture, short videos, digital enlargement, searching & printing directly without computer.
- Built-in-memory storage slot for SD card maximum storage upto 4GB.
- Built-in 5 megapixel camera with auto exposure. USB-2, AV output for interface with external LCD monitor, Computer & LCD projector.
- On screen record of data, month, day, hour & minute.
- Grid can be viewed for various analysis.

Eyepiece

Wide field eyepiece 10X (paired) F.O.V. 18mm.

Mechanical Body

- Co-axial focusing system with large knobs, PRE-FOCUSING LEVER & TENSION ADJUSTMENT RING.
- Quadruple nosepiece on ball bearing.
- Mechanical stage is 153mmX204mm and have co-axial controls on ball bearing guide ways. Circular disc rotatable at 360°.

Objectives (Infinity Corrected)

- LWD Infinite Plan 10X • LWD Infinite Plan 50X
- LWD Infinite Plan 20X • LWD Infinite Plan 100X (Dry)

Illuminator

Epi-illuminator has 12V-50W halogen lamp with intensity control knob. Polarising attachment fixed in Epi-illuminator arm.

Standard Accessories

12V/50W Halogen tungsten bulb. Styro foam molded pack.

Binocular Observation Head with LCD Camera on Vertical tube.

- Siedentopf binocular observation head & inclined at 45°. Dioptric adjustment on ocular. Interpupillary distance from 52 to 75mm.
- 8 inch TFT screen with resolution of 800x600 fixed on camera body.
- Digital camera is fixed with 3.0 Megapixel CMOS sensor.
- Built-in-memory storage slot for SD card maximum storage upto 8 GB.
- USB-2, AV out put for interface with external LCD monitor, computer & LCD projector.

Eyepiece

Wide field eyepiece 10X (paired) F.O.V. 20mm.

Mechanical Body

- Co-axial focusing system with large knobs, PRE-FOCUSING LEVER & TENSION ADJUSTMENT RING.
- Quadruple nosepiece on ball bearing.
- Mechanical stage is 153mmX204mm and have co-axial controls on ball bearing guide ways. Circular disc rotatable at 360°.

Objectives (Infinity Corrected)

- LWD Infinite Plan 10X • LWD Infinite Plan 50X
- LWD Infinite Plan 20X • LWD Infinite Plan 100X (Dry)

Illuminator

Epi-illuminator has 3V LED lamp with intensity control knob. Polarising attachment fixed in Epi-illuminator arm.

Standard Accessories

Styro foam molded pack.